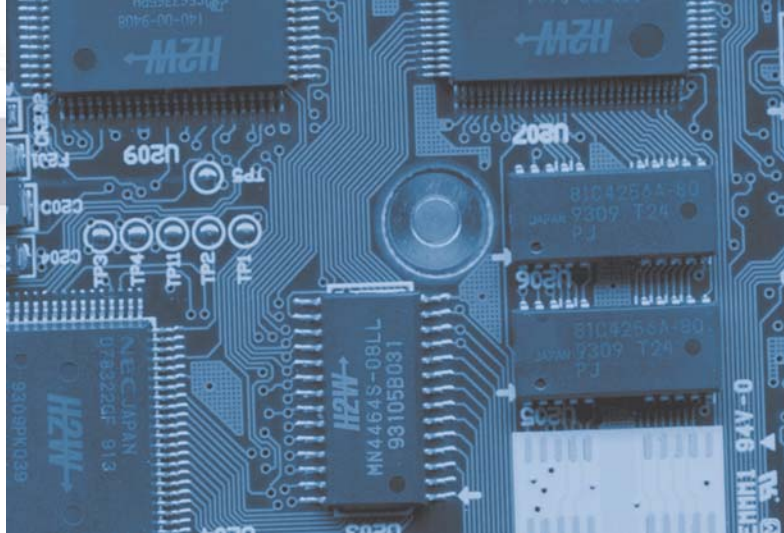


Our Commitment

H2W Technologies, Inc. is dedicated to the design and manufacture of linear and rotary motion products that are used in the motion control industry. We are committed to providing every customer with the optimal solution for their motion application in the shortest possible time, at the lowest possible cost using only the highest quality products.



Our Products

We offer a complete line of **linear electric motors** including; **single and dual axis linear steppers**, **DC brush** and **brushless** linear motors, **voice coil actuators**, and **AC induction** motors.

Our high speed and high precision **linear motor driven positioning stages** are ideal for both single and multi-axis closed loop servo applications. We also offer a complete line of **ball screw**, **lead screw** and **belt driven positioning stages**. We can provide you either a standard or custom designed positioning stage by itself or as a complete turnkey solution with a servo amplifier, power supply and programmable motion controller.

Other motion control products include; **limited angle torque motors** for compact, limited angular excursion rotary servo applications, **3 phase brushless rotary servo motors** with matching **digital servo amplifiers** and **permanent magnet linear brakes** for failsafe, zero power braking for baggage handling and people moving applications as well as amusement park rides.

H2W also offers design services for various types of electromagnetic devices such as magnetic latches, solenoids and rotary motion devices.

New products are constantly being introduced, so please check our web site www.h2wtech.com for the latest developments and new product offerings.

Our People

Every member of the H2W Technologies team is devoted to delivering quality. From initial consultation to final delivery, the goal of our team is complete customer satisfaction. Our innovative engineering, manufacturing experience, and commitment to customer service ensure that you will receive only the highest quality components.

With over 75 years combined experience in the linear and rotary motion field, H2W Technologies' core engineering team is led by Dr. Walter Hinds — PhD Physics, Fred Wilson — MSEE, and Mark P. Wilson — MSME. Our engineers are prepared to come up with unique and innovative solutions to your most demanding motion control requirements.

Please call us any time at **(888) 702-0540** and talk directly with one of our design engineers. We will give you straightforward honest answers to all of your technical questions and we will provide you with the optimal solution for all of your linear and rotary motion control applications.

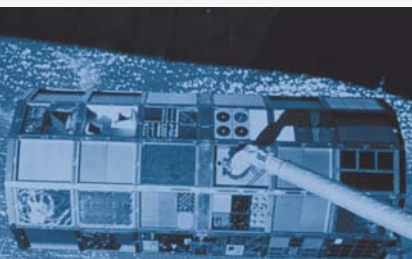


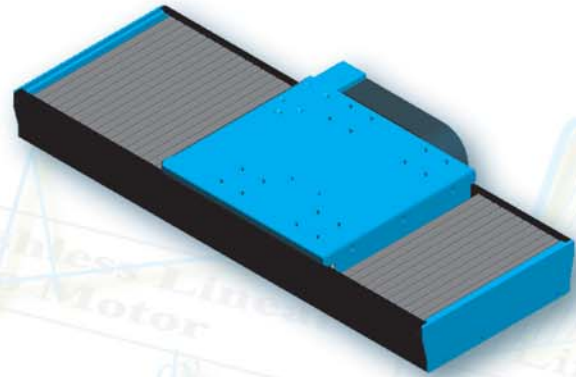
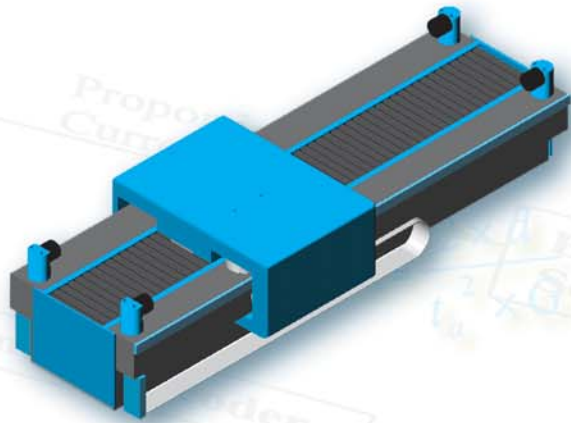
Industries Served

Semiconductor • Fiber Optic • Medical • Aerospace • Clean Room • Robotics
Factory Automation • Packaging • Automotive • Material Handling
People Moving • Amusement Park Rides

H2W Technologies, Inc.

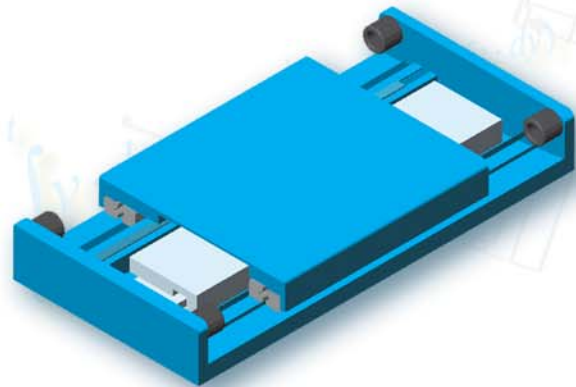
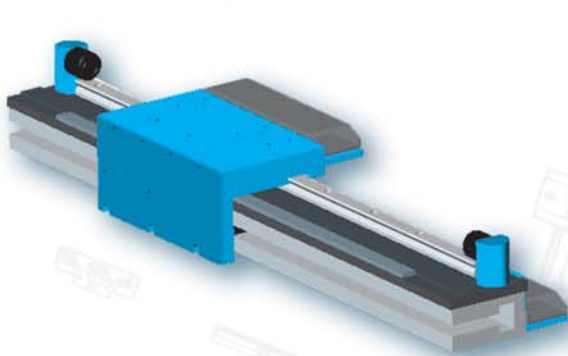
28310C Ave Crocker • Valencia, CA 91355 • USA
(888)-702-0540 • (661) 702-9346 Ph • (661) 702-9348 Fax
www.h2wtech.com • info@h2wtech.com





H2W







Technologies, Inc.





Innovation in Linear Motion

www.h2wtech.com

Linear Motors

												
	Brushless		Brush	Voice Coil		Stepper		Induction				
	Ironless	Iron Core		Moving Coil	Moving Magnet	Single Axis	Dual Axis					
Positioning Type	Closed Loop	Closed Loop	Closed Loop	Closed Loop	Closed Loop	Open + Closed Loop	Open + Closed Loop	Closed Loop + No Positioning				
Continuous Force	71 lbs (315 N)	631lbs (2805 N)	60 lbs (266 N)	100 lbs (444 N)	100 lbs (444 N)	50 lbs (222 N)	30 lbs (133 N)	43 lbs (190 N)				
Peak Force	240 lbs (1068 N)	2214 lbs (9839 N)	180 lbs (800 N)	300 lbs (1333 N)	300 lbs (1333 N)	65 lbs (289 N)	38 lbs (169 N)	214 lbs (950 N)				
Stroke	Unlimited	Unlimited	120 in (3 m)	2 in (50.8 mm)	4 in (101.6 mm)	144 in (3.6 m)	40 in x 60 in (1 m x 1.52 m)	Unlimited				
Velocity	240 ips (6 m/s)	240 ips (6m/s)	100 ips (2.5 m/s)	50 ips (1.27 m/s)	50 ips (1.27 m/s)	80 ips (2 m/s)	80 ips (2 m/s)	1800 ips (45 m/s)				
Acceleration	12 g's	12 g's	12 g's	20 g's	20 g's	1 g	1 g	5 g's				
Accuracy (Typ)	0.0001 in/ft (8.3 μm/m) w/ Encoder	0.0001 in/ft (8.3 μm/m) w/ Encoder	0.0001 in/ft (8.3 μm/m) w/ Encoder	0.0001 in/ft (8.3 μm/m) w/ Encoder	0.0001 in/ft (8.3 μm/m) w/ Encoder	0.001 in/ft (85 μm/m)	0.001 in/ft (85 μm/m)	0.005 in/ft (416 μm/m)				
Repeatability (Typ)	0.0002 in (5 μm)	0.0002 in (5 μm)	0.0002 in (5 μm)	0.0002 in (5 μm)	0.0002 in (5 μm)	0.0004 in (10 μm)	0.0004 in (10 μm)	0.002 in (50 μm)				
Amplifier or Drive Type	3 Phase Brushless Servo, Trapezoidal or Sinusoidal	3 Phase Brushless Servo, Trapezoidal or Sinusoidal	Brush Type PWM Servo	Linear/PWM Servo	Linear/PWM Servo	Microstepping	Microstepping	AC Line Voltage, Var. Freq. or Vector Drive				
Bearing Type	Customer Supplied	Customer Supplied	Customer Supplied	Customer Supplied	Bushing, Linear	Air / Roller	Air	Customer Supplied				
Options	Air, Water Cooling	Air, Water Cooling	Stationary Cables, Water Cooling	Custom Mounting, Custom Windings, Transducers	Custom Mounting, Custom Windings, Transducers	Custom Mounting, Custom Cables, 2 and 4 Phase	Custom Mounting, Custom Cables, 2 and 4 Phase	Air, Water Cooling				

Rotary Motors

		
	Limited Angle Torque Motors	Brushless Rotary Motors
Positioning Type	Closed Loop	Closed Loop
Winding	Single Phase	Three Phase
Continuous Torque	500 oz-in (3.5 Nm)	1515 oz-in (10.7 Nm)
Peak Torque	1500 in-oz (10.5 Nm)	7648 oz-in (54 Nm)
Angular Displacement	170 Degrees	360 Degrees
Speed	-	4500 rpm
Acceleration	5000 rad/sec_	9000 rad/sec_
Accuracy (Typ)	1 arc sec	1 arc sec
Repeatability (Typ)	0.5 arc sec	0.5 arc sec
Amplifier	Linear/PWM Servo	3 Phase Sinusoidal, Brushless
Options	Custom Designs, Housed or Kit	Resolver or Encoder, Brakes

H2W is represented by









H2W 
Technologies, Inc.

www.h2wtech.com

28310C Ave Crocker • Valencia, CA 91355 • USA
(888)-702-0540 • (661) 702-9346 Ph • (661) 702-9348 Fax
www.h2wtech.com • info@h2wtech.com

The values shown in all tables are typical and for reference only

Positioning Stages

						
	SR	DR	XR	AB	SC	BL
	Single Rail	Dual Rail	Cross Roller	Air Bearing	Ball/Lead Screw	Belt Driven
Positioning Type	Closed Loop	Closed Loop	Closed Loop	Closed Loop	Open + Closed Loop	Open + Closed Loop
Continuous Force	165 lbs (733 N)	445 lbs (1978 N)	71 lbs (316 N)	71 lbs (316 N)	1000 lbs (4448 N)	50 lbs (222 N)
Peak Force	550 lbs (2444 N)	1335 lbs (5933 N)	240 lbs (1067 N)	240 lbs (1067 N)	3000 lbs (13345 N)	150 lbs (667 N)
Stroke	120 in (3 m)	160 in (4 m)	12 in (0.3 m)	80 in (2 m)	72 in (1.57 m)	144 in (3.65 m)
Velocity	240 ips (6 m/s)	200 ips (5 m/s)	100 ips (2.5 m/s)	200 ips (5 m/s)	10 ips (0.25 m/s)	200 ips (5 m/s)
Acceleration	12 g's	9 g's	9 g's	9 g's	2 g's	2 g's
Load Capacity	55 lbs (25 kg)	442 lbs (200 kg)	100 lbs (45 kg)	22 lbs (10 kg)	1300 lbs (588 kg)	1300 lbs (588 kg)
Accuracy (Typ)	+/-0.0007 in/ft (+/-58 µm/m)	+/-0.0007 in/ft (+/-58 µm/m)	+/-0.0004 in/ft (+/-33 µm/m)	+/-0.0002 in/ft (+/-16 µm/m)	+/-0.004 in/ft (+/-333 µm/m)	+/-0.006 in/ft (+/-500 µm/m)
Repeatability (Typ)	+/-0.0004 in (+/-10 µm)	+/-0.0003 in (+/-7.5 µm)	+/-0.0002 in (+/-5 µm)	+/-0.0001 in (+/-2.5 µm)	+/-0.002 in (+/-50 µm)	+/-0.004 in (+/-100 µm)
Flatness	+/-0.0012 in/ft (+/-100 µm/m)	+/-0.0008 in/ft (+/-66 µm/m)	+/-0.0005 in/ft (+/-41 µm/m)	+/-0.0001 in/ft (+/-8 µm/m)	+/-0.0005 in/ft (+/-41 µm/m)	+/-0.002 in/ft (+/-165 µm/m)
Straightness	+/-0.0013 in/ft (+/-108 µm/m)	+/-0.0009 in/ft (+/-74 µm/m)	+/-0.0005 in/ft (+/-41 µm/m)	+/-0.0001 in/ft (+/-8 µm/m)	+/-0.0005 in/ft (+/-41 µm/m)	+/-0.0013 in/ft (+/-108 µm/m)
Motor Type	Linear Brushless	Linear Brushless	Linear Brushless	Linear Brushless	Rotary Stepper or Servo	Rotary Stepper or Servo
Bearing Type	Linear	Linear	Cross Roller	Air	Linear	Linear
Options	Table or Wall Mount, Multiple Slides, Compound Configurations	Table or Wall Mount, Multiple Slides, Compound Configurations	Custom Mounting	Table or Wall Mount, Multiple Slides, Custom Mounting	Table or Wall Mount, Compound Configurations	Table or Wall Mount, Compound Configurations




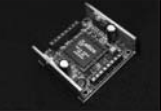
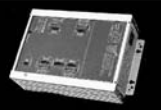
Two axis linear stepper motor gantry stage on aluminum base



High precision four axis ballscrew stage on granite base



Servo + Stepper Electronics

					
	Servo			Stepper	
	SABR PWM Servo Amplifier	ACBR PWM Servo Amplifier/Controller	IMD/ARS Digital Servo Amplifier/Controller	Single Axis Stepper Driver	Multi Axis Stepper Driver/Indexer
Integrated Controller	No	Yes	Yes	No	Yes
Communications Interface	-	Can-Bus, Profibus, RS232	RS232	-	RS232, RS485
Supply Voltage	11 - 50 VDC	11 - 50 VDC	115 - 400 VAC	12 - 45 VDC	90 - 265 VAC
Output Voltage	11 - 50 VDC	11 - 50 VDC	170 - 560 VDC	12 - 44 VDC	44 VDC
Peak Output Current	6 Amps	6 Amps	10 - 75 Amps	-	-
Continuous Output Current	3 Amps	3 Amps	5 - 40 Amps	3 Amps	5 Amps
Feedback Type	-	Resolver/ Encoder	Encoder	-	Encoder
Control Voltage	+/- 10 volts	-	-	Step & Direction	-
Switching/ Update Frequency	52 kHz	20 kHz	20 kHz	50 kHz	50 kHz

H2W Technologies, Inc. can provide turn key solutions with fully integrated amplifiers and controls for easy set up and installation.