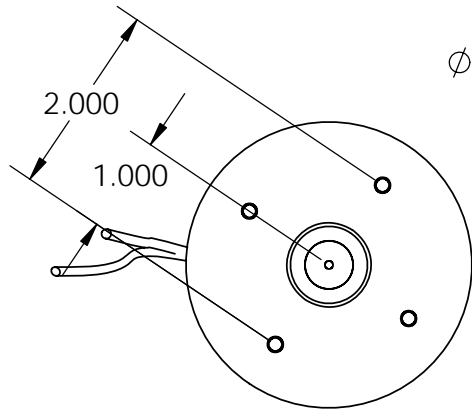


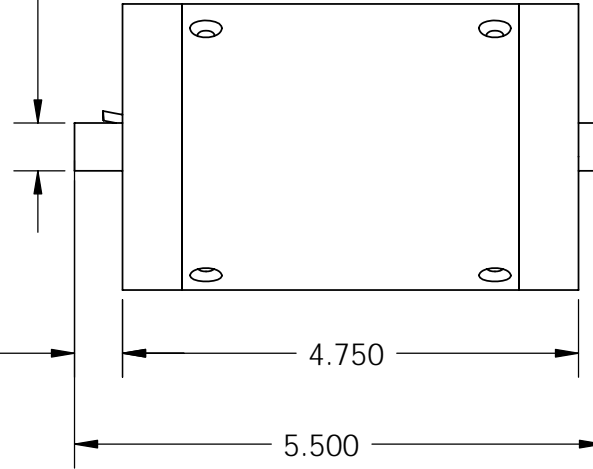
These drawings and specifications are the property of H2W Technologies, Inc. They are issued in confidence and shall not be reproduced, copied, or used without written permission from H2W Technologies, Inc.

1/4-28 UNF - 2B ∇ .500



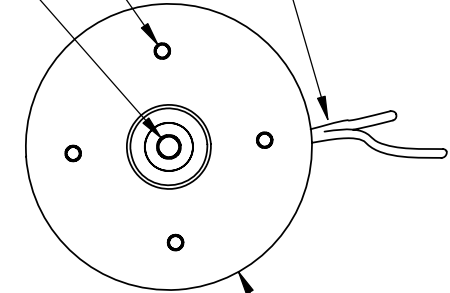
ϕ .500

.500
@ Midstroke

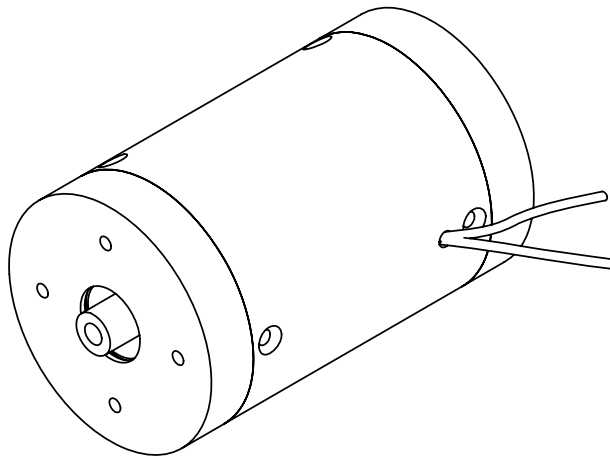


Tap 8-32 x .50 Dp. (4 Pl.)
(Both Sides)

Power Leads (2)



ϕ 2.980



SPECIFICATIONS	
Motor P/N	NCM05-28-180-2LB
Stroke	0.50"
Bearing Type	Linear Bushing
Moving Mass	1.0 LBS
Total Mass	5.5 LBS
Resistance	9.75 ohms
Force Constant	2.95 LBS/(Watt) ^{1/2}
Continuous Force	18.0 LBS
Peak Force	54.0 LBS
Power In @ 100% Duty	40 WATTS

RELEASED FOR MFG.

DATE	02-10-05		
BY	<i>Amber</i>		
MATERIAL			
FINISH			
DRAWN	DATE	APPROVED	DATE
JRM	01-26-05	MPW	01-26-05

H2W Technologies, Inc.

28310-C Ave Crocker Valencia, CA 91355 USA
Tel: (661)-702-9346 Fax: (661)-702-9348
www.h2wtech.com

TITLE		
NCM05-28-180-2LB		
DWG #	REV	ECN
30-0391	A	

UNLESS SPECIFIED OTHERWISE:
All dimensions are in inches
Standard Tolerances are as follows
.XXX ±.005 ANGLES +1°
XX ±.010 FILLETS AND
X ±.020 CORNERS .010
Remove All Burrs and Sharp Edges