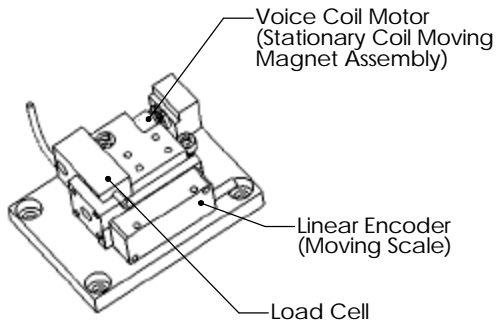
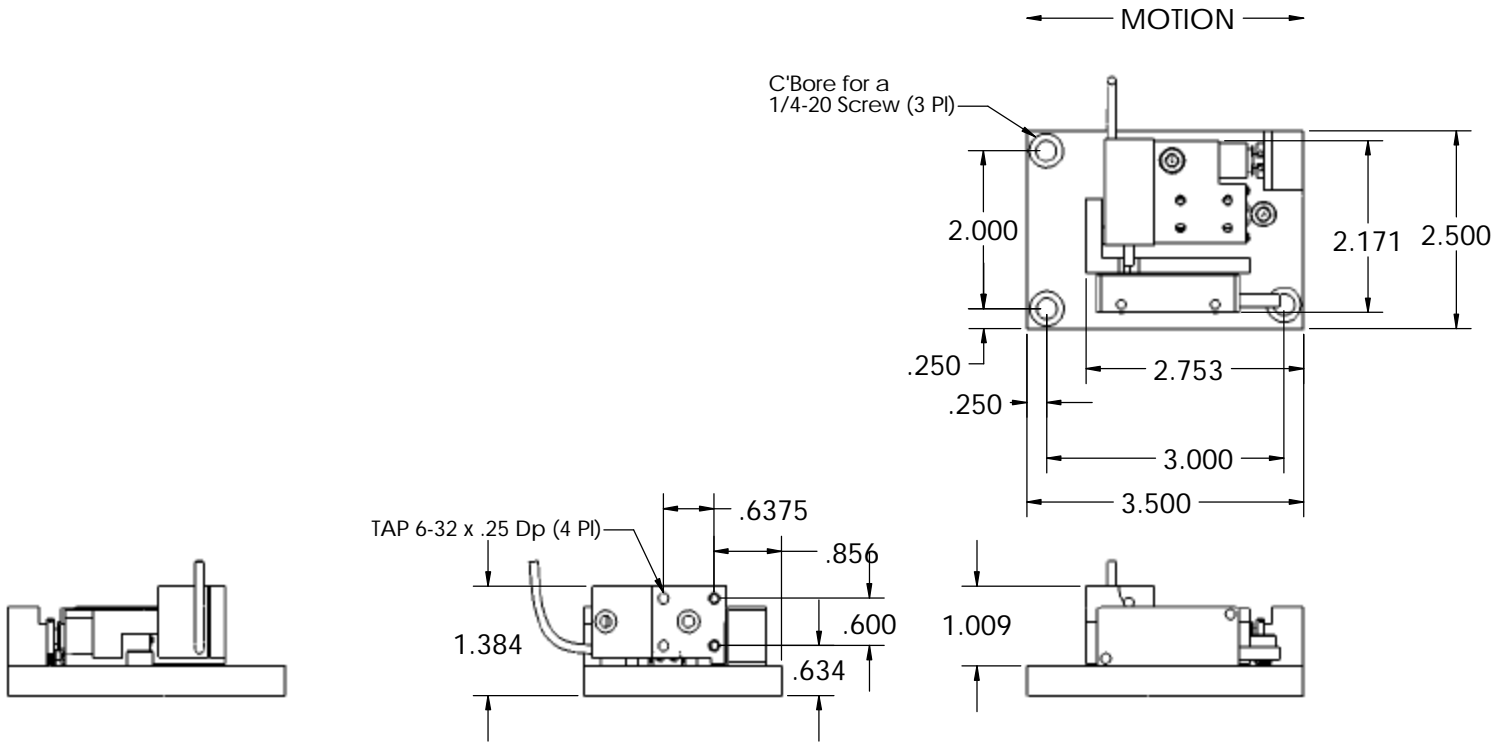


These drawings and specifications are the property of H2W Technologies, Inc. They are issued in confidence and shall not be reproduced, copied, or used without written permission from H2W Technologies, Inc.



| Stage Specifications |                 |
|----------------------|-----------------|
| Motor P/N            | NCC01-04-001-1X |
| Stroke               | 0.125"          |
| Force                | 0.06 lb Cont.   |
|                      | 0.18 lb Peak    |
| Bearing Type         | Cross Roller    |
| Encoder Resolution   | 0.1 Micron      |
| Load Cell Resolution | 0.1 gram        |

UNLESS SPECIFIED OTHERWISE:  
 All dimensions are in inches  
 Standard Tolerances are as follows:  
 XXX ±.005 ANGLES ±1°  
 XX ±.010 FILLETS AND  
 X ±.020 CORNERS 010  
 Remove All Burs and Sharp Edges

| MATERIAL |          | FINISH   |          |
|----------|----------|----------|----------|
| DRAWN    | DATE     | APPROVED | DATE     |
| OCG      | 12-13-04 | FGW      | 12-13-04 |

|  |     |     |
|--|-----|-----|
| <b>H2W Technologies, Inc.</b>  |     |     |
| 28310-C Ave Crocker Valencia, CA 91355 USA<br>Tel: (661)-702-9346 Fax: (661)-702-9348<br>www.h2wtech.com |     |     |
| TITLE  |     |     |
| VCS01-001-CR-001   |     |     |
| DWG #  | REV | ECN |
| 30-0370  | A   |     |