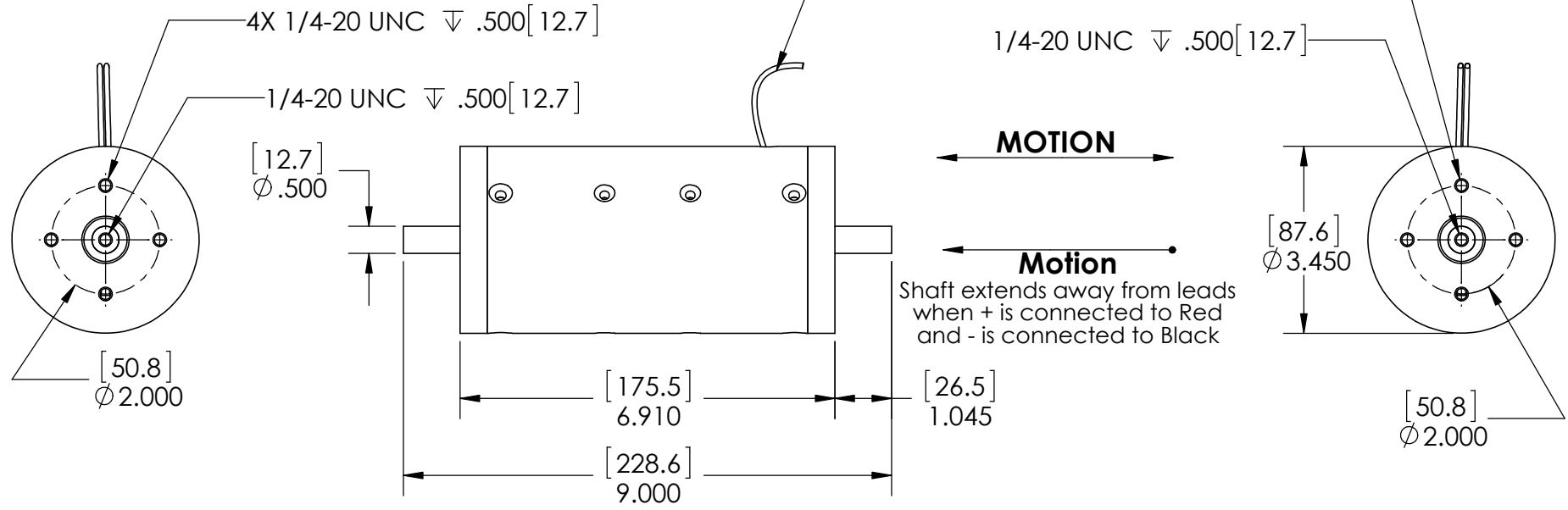


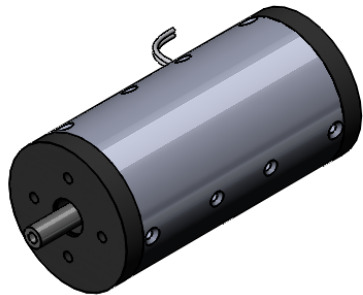
These drawings and specifications are the property of H2W Technologies, Inc. They are issued in confidence and shall not be reproduced, copied, or used without written permission from H2W Technologies, Inc. (www.h2wtech.com)

REVISION TABLE					
REV	ECN#	DESCRIPTION	REV BY	APPROVED	DATE
---	---	Original Drawing	JRM	MPW	06-20-13

Power Leads (2)
 #22 AWG Twisted Shielded Leads
 M16878/4 (2 Conductor, Black and White)
 18" Long (Longer leads available upon request)



Actuator shown at midstroke.



UNLESS SPECIFIED OTHERWISE: All dimensions are in inches Standard Tolerances are as follows .XXX ±.005 ANGLES ±1° .XX ±.010 FILLETS .010 .X ±.020 CORNERS .010 Remove All Burs and Sharp Edges				MATERIAL		TITLE	
				FINISH		Non-Comm Moving Magnet Actuator Model# NCM08-35-450-3LB	
DRAWN	DATE	APPROVED	DATE	DWG #	REV	SHEET	
JRM	06-20-13	MPW	06-20-13	30-1104	---	1 of 2	

H2W Technologies, Inc.
 26470 Ruether Ave #102 Santa Clarita, CA 91350 USA
 Tel: (661) 251-2081 Fax: (661) 251-2067
 www.h2wtech.com

MOVING MAGNET NON-COMM ACTUATOR SPECIFICATIONS		
Motor P/N	NCM08-35-450-3LB	
Stroke	0.75"	19.1 mm
Radial Clearance	N/A in	N/A mm
Bearing Type	Linear Bushings	
Moving Mass	4.60 lbs	2088 grams
Total Mass	12.6 lbs	5720 grams
Resistance @ 20C	12.0 ohms	
Inductance @ 20C	6.45 mH	
Electrical Time Constant	0.55 msec	
Motor Constant	5.42 LBS/SQRT(Watt)	24.1 N/SQRT(Watt)
Force Constant	18.8 LBS/Amp	83.6 N/Amp
Back EMF	2.1 V/ips	83.6 V/m/sec
Continuous Force	45 LBS	200 N
Max Power @ 100% Duty	68 Watts	
Peak Force	135 LBS	600 N
Max Power @ 10% Duty	620 Watts	